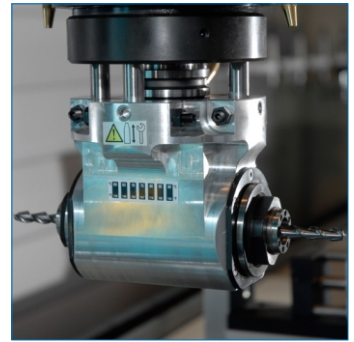
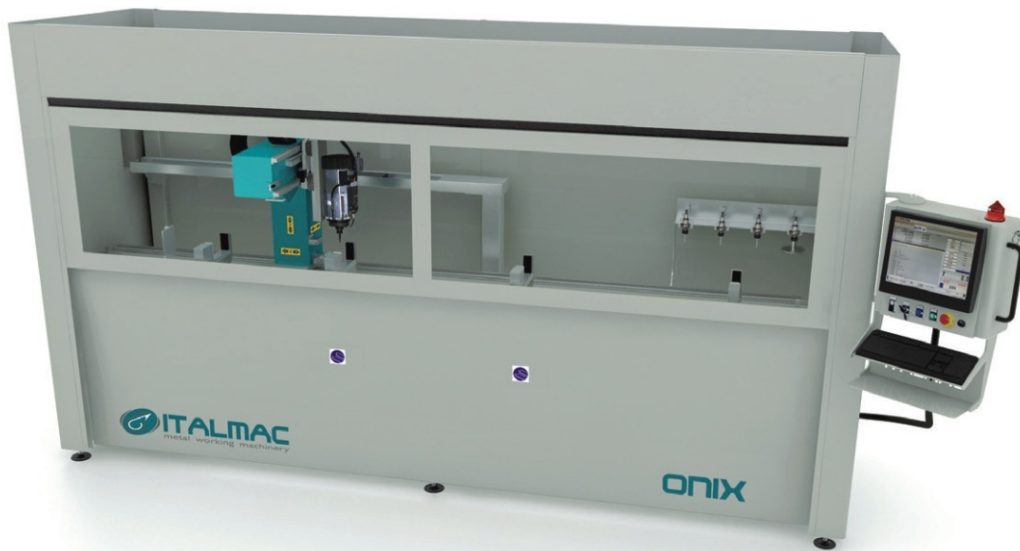


ITALMAC is a cutting edge company focused on customers. For this reason, their R&D department plays a crucial role in the company's production, as it is the place where the most cutting edge and reliable solutions are designed. An example of this philosophy is represented by machining centres, which stand out in the Italian and international market as they are an excellent solution when processing aluminium extruded profiles.

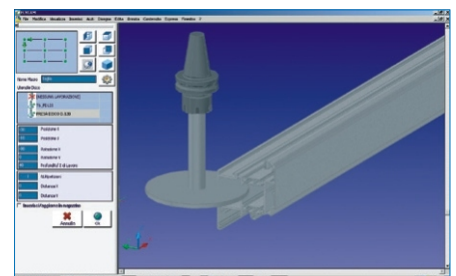
ITALMAC boasts of a broad selection of technologies targeted to both the door and window manufacturers and to the heavy industry. Innovation, safety and excellent performance are the major assets of ITALMAC products, which are not only actively employed in the industrial sector, but also enable to save money and increase the productivity.



3-Axis CNC machining center with moving portal, especially designed for milling, drilling, threading and cutting bars or workpieces made of aluminium, PVC, light alloys and steel.

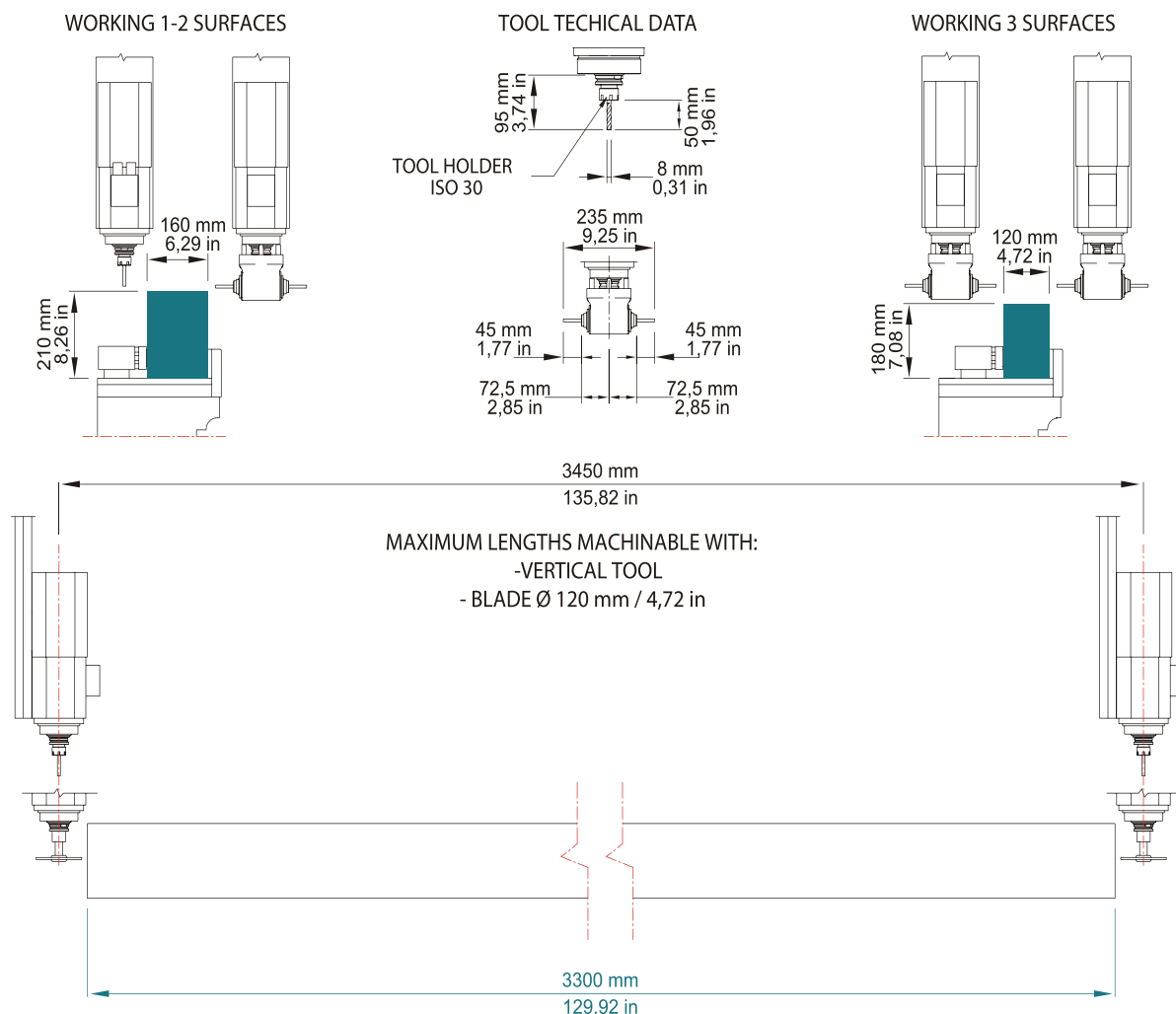
Technical features:

- Main structures made of electro-welded steel, normalized and worked with CNC machine tools.
- 3-Axis movement controlled by high-precision brushless servomotors.
- Electric spindle (4 kW in S1), with ISO 30 tool connection suitable for material removal processes during milling and drilling operations.
- Tool magazine holding up to 5 tools, mounted on the base of the machine.
- Clamps manual positioning (automatic positioning optional).
- Maximum workable length 3.3 meters.
- Chips conveyor plate.
- Full safety enclosure.
- Angular head which allows machining operations on the lateral faces of the workpiece without its repositioning.



The specifications and illustrations in this catalogue are only a guide, Dynamic Machines Services Sdn Bhd therefore reserves the right to make any modifications it deems necessary for technical or commercial reasons.

MAXIMUM SIZE MACHINABLE WITH VERTICAL TOOL AND ANGULAR HEAD



Description	Onix 3 axis 3.3 version	Description	Onix 3 axis 3.3 version
X AXIS LONGITUDINAL	3450 mm 135.82 in	NUMBER OF STOP REFERENCES STANDARD	1 manual
Y AXIS CROSS	600 mm 23.6 in	VOLTAGE	400 V triphase - 50/60 Hz
Z AXIS VERTICAL	265 mm 10.43 in	SPINDLE MOTOR POWER S1	4 kW (5,5 kW / 7,5 kW optional)
MACHINING OF THE WORKPIECE SIDES	angular head	ADJUSTABLE ELECTRO SPINDLE SPEED	0-18000 rpm (0-24000 rpm optional)
AXIS ACCELERATION	X 1.5 m/sec <sup>2</sup> Y 1.5 m/sec <sup>2</sup> Z 2 m/sec <sup>2</sup>	TOOL HOLDER	ISO 30
AXIS POSITIONING SPEED	X 40 m/min Y 40 m/min Z 15 m/min	SPINDLE COOLING SYSTEM	Electric fan
TOOL MAGAZINE CAPACITY	5 positions	OPERATING PRESSURE	7 bar
MAXIMUM MILLING BLADE DIAMETER	120 mm 4.72 in	TOTAL INSTALLED POWER	6 kW / 8kW
NUMBER OF STANDARD VICES	4	OVERALL DIMENSIONS (LxPxH) mm - WEIGHT kg	4600x1675x2260 mm - 1400 kg
VICES POSITIONING	manual (automatic optional)	OVERALL DIMENSIONS (LxPxH) in - WEIGHT lb	181.1x66x89 in - 3080 lb

The specifications and illustrations in this catalogue are only a guide, Dynamic Machines Services Sdn Bhd therefore reserves the right to make any modifications it deems necessary for technical or commercial reasons.